



國際儀器有限公司 Universal Instrument Co. Ltd.

Room 802, 8/F., Treasure Centre, 42 Hung To Road, Kwun Tong, Kowloon, Hong Kong
Tel: (852) 28335188, Fax: (852) 29600689
e-mail: info@uichkl.com Web: <http://www.uichkl.com>



TP9000 Temperature Profile Checker

The TP9000 Temperature Profile Checker is an innovative designed temperature measuring system to measure and record temperature data for various applications including SMD reflow oven, wave soldering, epoxy curing, and many more. The checker has 6 channels and with its internal built in memory it can record measured temperature data that can be retrieved and be analyzed through a RS232 interface by a PC using the supplied dedicated software TPWin. Analyzed result can be saved to computer or a permanent print can be made. A thermal barrier box is provided as standard. It allows user to lay the checker inside a high temperature oven. The checker runs along with the oven convey belt and the temperature of the oven can be measured without attaching long thermal couple wires as before. Optional rack fitted to almost every oven convey and a temperature probe clamp assembly designed to position the probe to any position at which temperature is measured is available. The profile checker is calibrated before shipment and can be easily calibrated through control software as required. A dedicated operation and analysis software (TPWin) is supplied both in English, and Traditional Chinese versions.

TP9000 Specification

Hardware

No of channels	6 channels
Measuring range	0 ~ 500°C
Thermocouple type	K type
Accuracy	+/- 0.5°C
Resolution	0.2°C
Internal Memory	512KB
Sampling Speed	0.1, 0.2, 0.5, 1, 2 sec / sample (Selectable)
Sampling duration	7, 13, 34, 68, 133 min (Reflow mode)
Over temp. protection	Over 70 °C LED indication & auto power OFF
Communication port	RS-232
Power source	Rechargeable 9V battery, 1600 mAH
Battery life	Depend on operation, normal >200 hours
Profile checker dimension	App. W100mm x L190mm x D27 mm

Operation

Two Modes	Real Time & Reflow
Data Display	Excel and Graphic Form

Standard accessories:

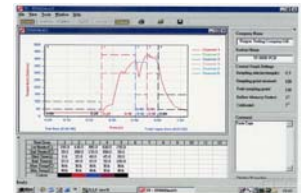
DC Charger/rechargeable battery	220/110 ACV input, DC 9V output/ One each.
Miniature Temperature Plug	Six pieces miniature plug plus K type temp. wires (2 ft each)
Software TPWin	Application/Diagnostic (in CD)
RS232 connection cable	One
Manual	Operation (English, Chinese/in CD)
Protective case	One portable aluminum suit case. App. W25xL30xD9.5cm

Optional accessories :

Temperature probes	K type temperature probe (Models from Anritsu)
Probe clamp assembly	Special designed to hold temperature probe (Special TP901)
USB to RS232 Conversion Cable	Allowing sending data to computer through USB (TP902)

Computer requirement:

• Compatible computer	IBM PC-AT, Pentium II or higher, Recommended
• Microsoft Windows	XP
• Internal memory	64 MB, 128 MB is recommended
• Free hard disc space	10 MB is recommended before installation
• Display system	AVGA, Resolution of (1024x800) or more
• Communication port	RS232 or USB



Profile Record



Suit Case



Charger



Thermocouple Wire & battery



國際儀器有限公司 Universal Instrument Co. Ltd.

Room 802, 8/F., Treasure Centre, 42 Hung To Road, Kwun Tong, Kowloon, Hong Kong
Tel: (852) 28335188, Fax: (852) 29600689
e-mail: info@uichkl.com Web: <http://www.uichkl.com>



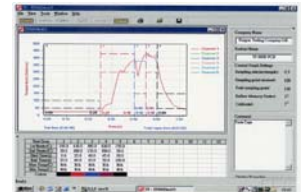
迴峰爐溫測儀 TP9000 型

TP9000 迴峰爐溫測儀採用最新硬體及軟體設計,適用於測儀及記錄一般迴峰爐內,單或雙波峰焊爐內之爐溫,及其它溫測模式.溫測系統提供六個溫測通道,其內置記憶可記憶及儲存測試之溫度數據,採用特設專用程控軟件 TPWin,經 RS232 介面,溫度數據可用電腦進行分式,儲存,及打印,其配備之隔熱外盒容許溫測儀放置在迴峰爐內,一并連同爐輸送帶通過熱爐隧道,免除以往連接頗長感溫線,進行測試.TP9000 迴峰爐溫測儀提供特設軟件校對功能,方便快捷校對,同時提供英文及繁體中文專用程控軟件 TPWin 板.除標準配件外另備選購配件如測溫棒及特設夾具就應用情況,隨意將溫度棒測溫點定至任何待測位置,以便加強使用及測儀功能.

TP9000 特性

硬件

通道	6 通道
溫度測試範圍	攝氏 0 至 500 度
感測類型	K 型
準確度	攝氏 +/- 0.5 度
精確度	攝氏 0.2 度
內置記憶	512 KB
取樣速度	可預設每秒 0.1, 0.2, 0.5, 1, 2 次取樣
取樣時限	7, 13, 34, 68, 133 分 (Reflow 模式)
超溫保護	超溫氏 70 度 LED 警號燈亮及溫測儀電源自動關掉
通訊連接介面	RS-232 介面
電源	9 伏, 1600 mA 充電電池
電池壽命	一般可超二百小時,是符使用取樣速度
溫測儀呎吋	大約: 闊 100mm x 長 190mm x 厚 27 mm
操作模式	
兩種模式	即時 Real Time & Reflow 模式
數據顯示方式	以 Excel 及 and Graphic Form 曲線圖
標準配件	
直流充電器/充電電池	220/110 伏交流電輸入, 9 伏直流電輸出 / 一只
K 型插頭	六只 K 類型插頭及六條 K 型感溫線 (每條兩呎長)
程控軟件 TPWin	程控及分析用 (以光碟形式提供) / 一份
RS232 連接線	一條
說明書	操作說明書 (中英文各一份)
保護箱	精美鋁質手提箱 (呎吋闊 25x 長 30x 厚 9.5cm) / 一只
選購配件	
測溫棒	K 型測溫棒 (安立牌)
夾具組合	特設夾具 (TP901)
USB 轉 RS232 轉換線	連接 USB 傳送數據至電腦 (TP902)
電腦基本特性要求:	
● 電腦	IBM PC-AT 或同類. 電腦系統 Pentium II 或以上
● 視窗版本	XP
● 記憶系統	內置 64 MB, 最佳 128 MB
● 可用記憶硬盤容量	安裝程控軟件 TPWin 前最少有 10 MB
● 顯示系統	AVGA, 精解度 (1024x800 點) 或以上
● 電腦連接介面	RS232 或 USB



圖象顯示紀錄數據



手提箱



充電器



插頭/感度線/電池